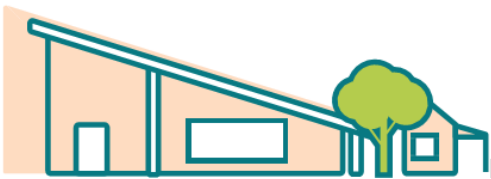




2023 ANNUAL REPORT

NARACORTE SOUTH PRIMARY SCHOOL





2023 annual report to the Community

Naracoorte South Primary School

Naracoorte South Primary School number: 936

Partnership: Wrattenbully



School principal:

Jessica Edwards

A handwritten signature in purple ink that reads "J Edwards".



Date of endorsement:

08/02/2024

Context Statement

Naracoorte South Primary School caters for students from R-6. At the time of this report, the enrolment in 2023 is 244. Naracoorte South Primary School is classified as Category 4 on the Department for Education Index of Educational Disadvantage. At the time of this report, the school population includes 6% Aboriginal students, 9% students with disabilities, 8% students with English as an additional language or dialect (EALD) funded background. Further information about the school is available on the school's website (including its context statement), as well as the My School website.

Governing Council Report

Wow- blink and you miss it. The end of the school year is upon us and I want to take the opportunity to thank all our wonderful leaders, teachers and SSO's for their support, hard work and dedication to our children and their education. The year has felt pretty straight forward, unlike the past couple of years and it does feel nice to back to some sort of normal. The year has seen many special events being held, Mothers/Special persons day, assemblies, camps, book week parade, Father's Day breakfast, walkathon and of course our wonderful school concert.

Sports Day was held in term 1 and a fantastic day it was. Wrattontully came away with a win, just! With only 9 points separating the 3 teams and there were many great displays of determination and sportsmanship. Harmony Day was on again, this year due to the weather we all had to cram into the Town Hall, but our students and teachers did a fantastic job with their singing, dancing and performance.

The school concert was a highlight of the year. A fabulous 2 nights of performances and congratulations to all the students on their hard work in putting together such amazing performances for all their friends and family to enjoy.

A big thank you to Kirsty Lush and our Fundraising subcommittee who do a lot for organising throughout the year to raise vital funds for our school. They have had another very successful year raising over \$10,000 which is a huge achievement. We have held multiple working bees this year and this has seen some lovely improvements to our school gardens, playgrounds and during the end of the year school holidays an upgrade to our canteen! I really want to thank all families that come along and help at our working bees, this is your school and it's lovely to know that everyone is willing to put in the effort to keep upgrading and improving our beautiful site. I need to thank our hard-working Special Projects subcommittee who do lots of the organising of these working bees especially James & Megan Hefferan and Di Schickel for their time and expertise they give to our school. Our next HUGE and exciting project is the new nature playground which should begin at the end of the term! This will be a beautiful upgrade to our current nature playground, and we are sure all our students over the coming years will get many hours of enjoyment from it.

I need to take this opportunity to thank some special people leaving our school at the end of the year. Our wonderful canteen manager, Ginny who we thank for all her hard work and yummy food that she has brought to us all, she will be missed. Excitingly we have a new face managing the canteen next year, Tiff Pearce who is another passionate foodie who will do a sensational job and we are lucky to have her join the school team. Cathy Biggins is retiring at the end of year after 40 years of teaching- what a achievement! We thank her for all her hard work and support that you have given every student over the years, and we hope that your retirement is full of lots of happy and relaxing memories.

A school cannot function without a governing council and I really believe we have a great governing council at our school. I want to thank all the parents that give up their time to be a part of the planning and decision making process and who always put their hands up to help out when the school needs it. We truly have a wonderful school community and I look forward to another successful year in 2024, with lots of new faces and families joining the NSPS community, I know they will love being a part of such a vibrant and warm school community.

Looking forward to a fantastic 2024 at NSPS!

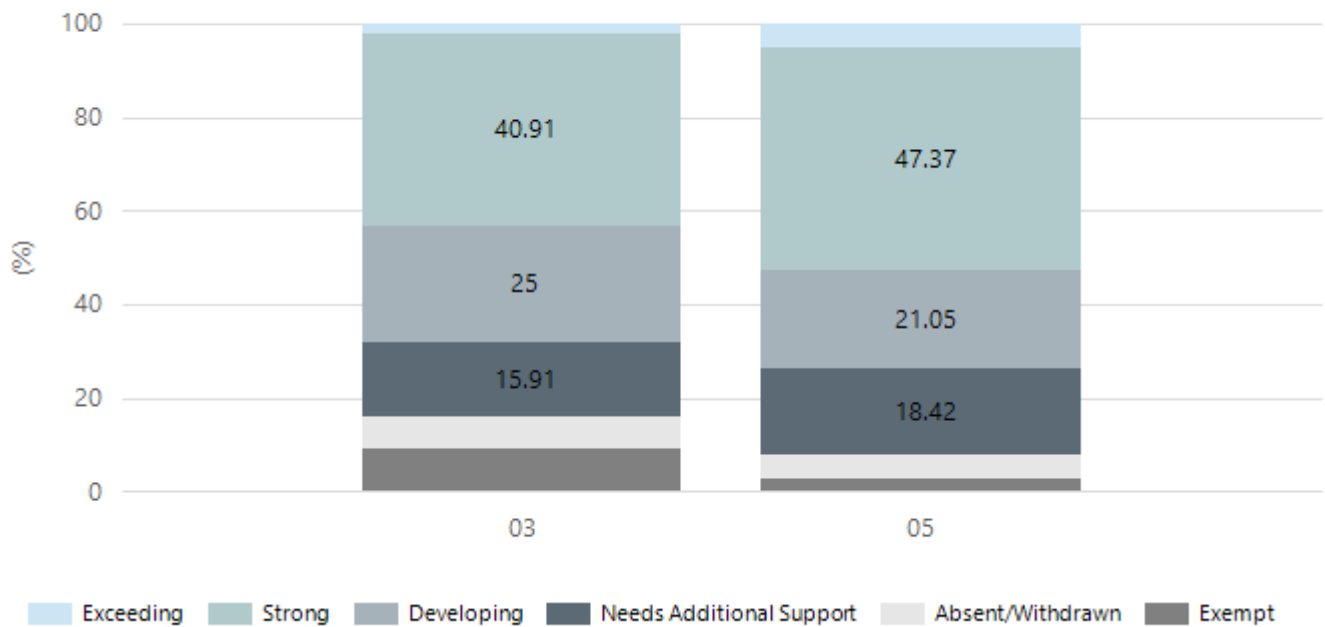
Monique Crossling
Governing Council Chairperson

Performance Summary

NAPLAN Proficiency

In 2023, the Australian Curriculum, Assessment and Reporting Authority (ACARA) - a Commonwealth Independent statutory authority - announced changes to NAPLAN performance reporting. This new way of reporting by ACARA that NAPLAN results from 2023 will not be comparable to previous years. The new approach replaces the previous numerical NAPLAN bands and the national minimum standard.

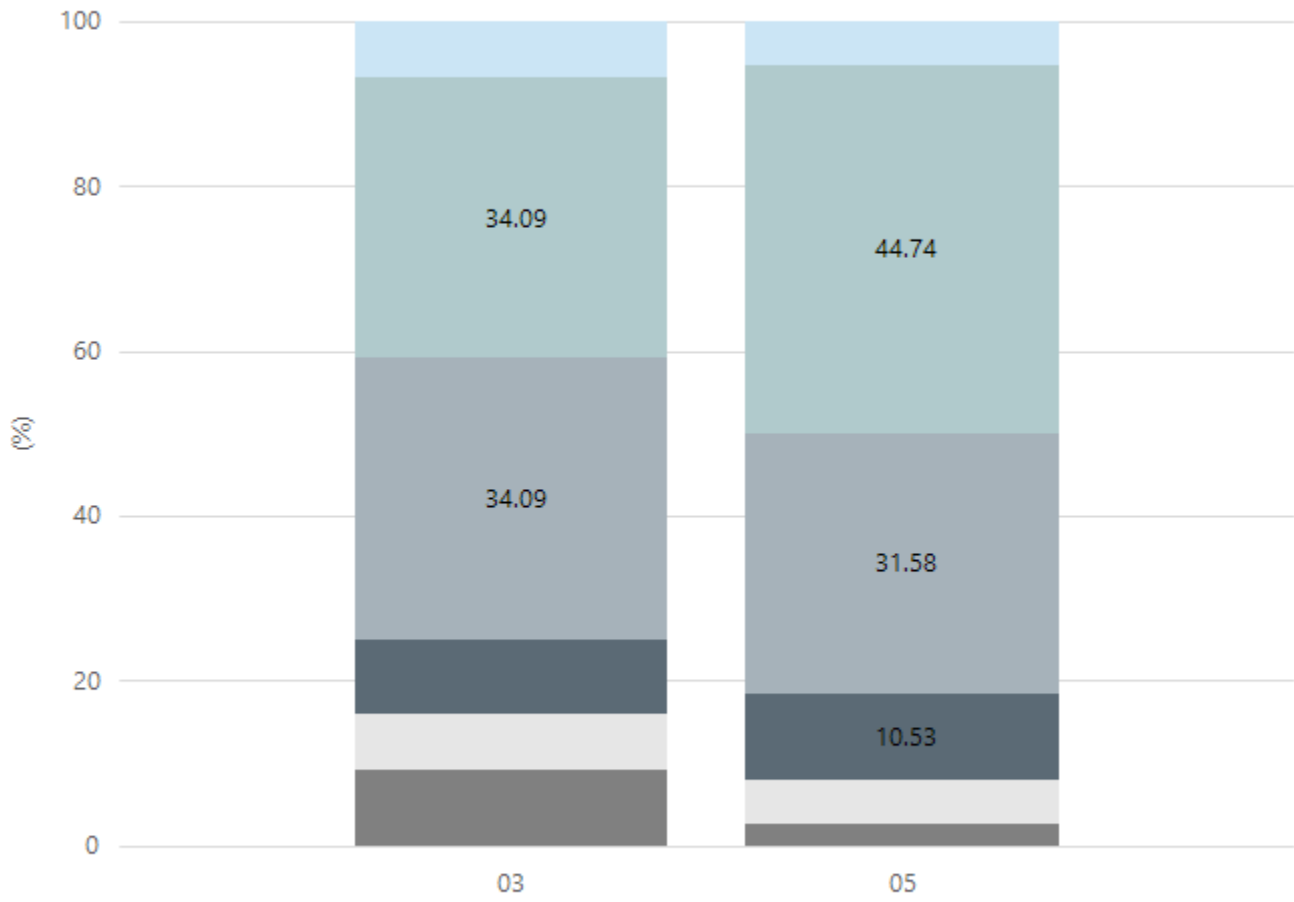
Numeracy



Year Level	03	05
Exceeding	1	2
Strong	18	18
Developing	11	8
Needs Additional Support	7	7
Absent/Withdrawn	3	2
Exempt	4	1
Total	44	38

Data Source: Department for Education Assessment Data Holdings, 2023. When there are less than six students in a cohort, no data is supplied.

Reading

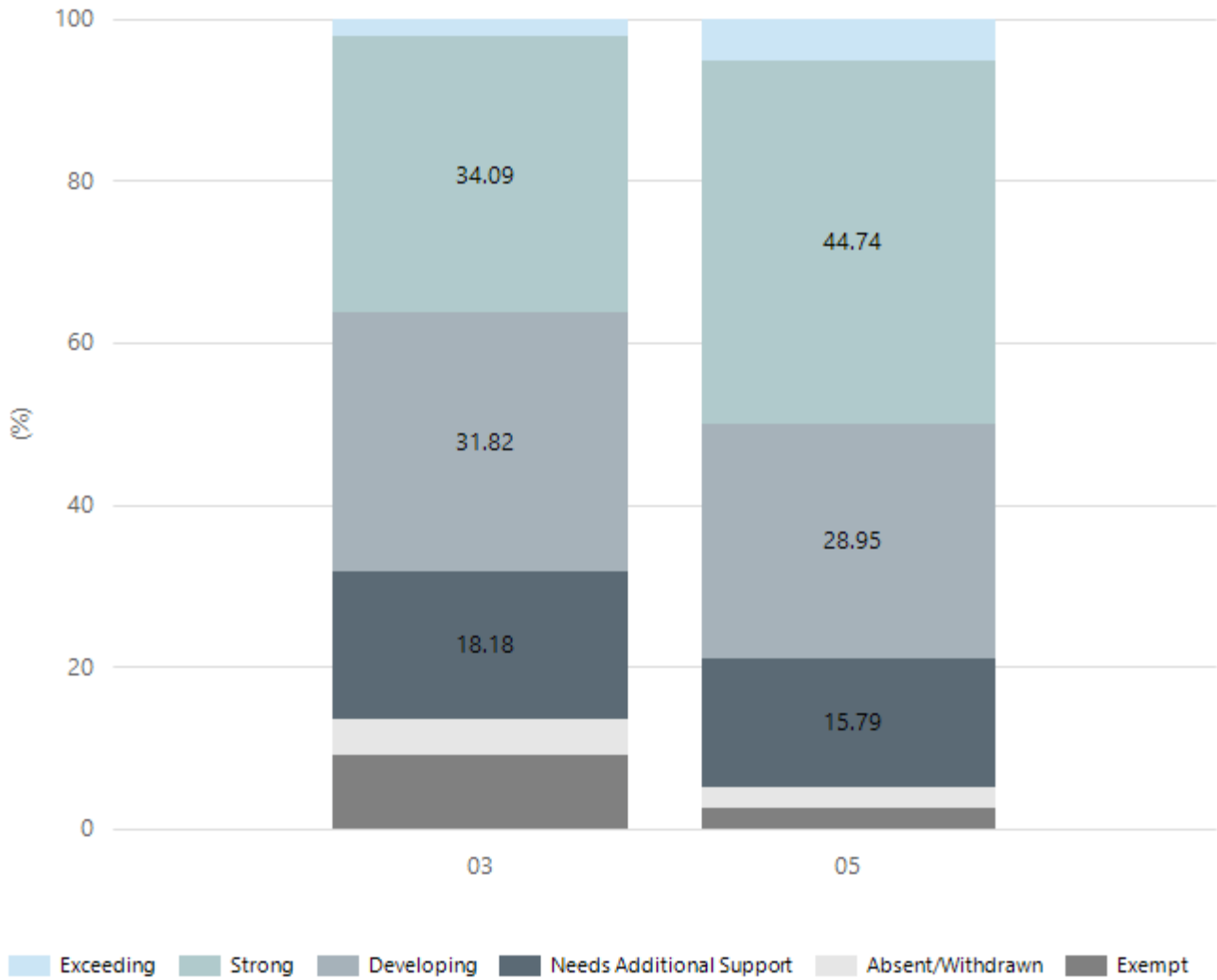


Exceeding Strong Developing Needs Additional Support Absent/Withdrawn Exempt

Year Level	03	05
Exceeding	3	2
Strong	15	17
Developing	15	12
Needs Additional Support	4	4
Absent/Withdrawn	3	2
Exempt	4	1
Total	44	38

Data Source: Department for Education Assessment Data Holdings, 2023. When there are less than six students in a cohort, no data is supplied.

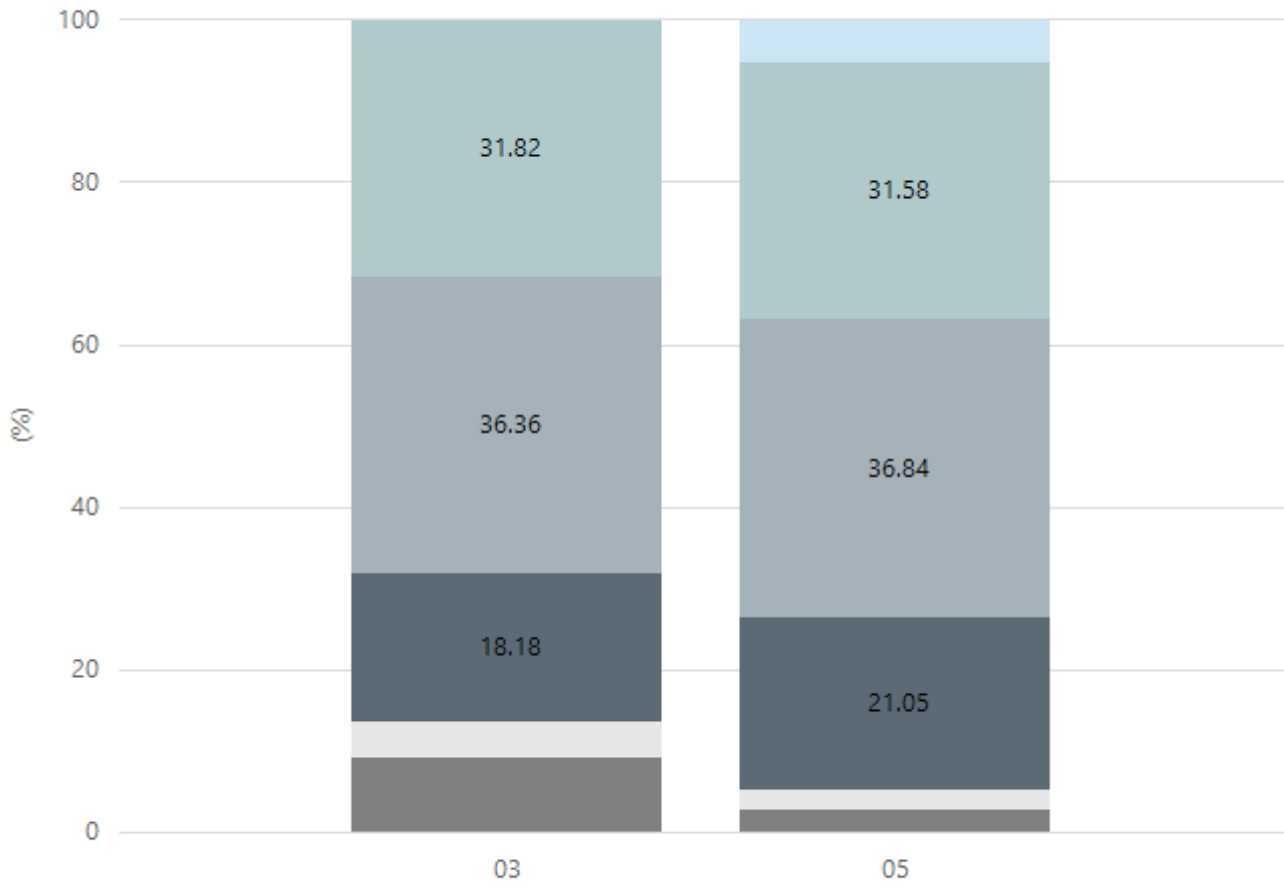
Writing



Year Level	03	05
Exceeding	1	2
Strong	15	17
Developing	14	11
Needs Additional Support	8	6
Absent/Withdrawn	2	1
Exempt	4	1
Total	44	38

Data Source: Department for Education Assessment Data Holdings, 2023. When there are less than six students in a cohort, no data is supplied.

Grammar

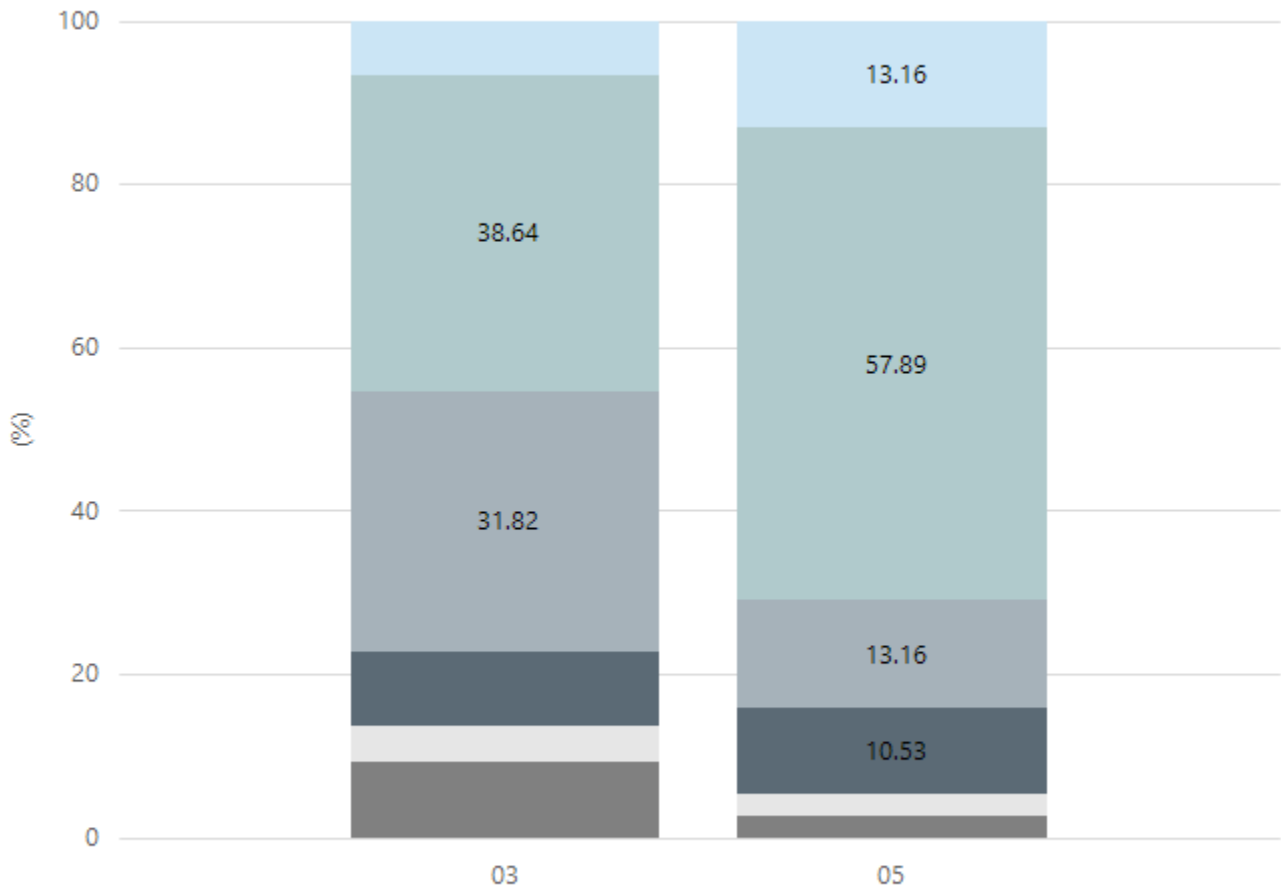


Exceeding Strong Developing Needs Additional Support Absent/Withdrawn Exempt

Year Level	03	05
Exceeding		2
Strong	14	12
Developing	16	14
Needs Additional Support	8	8
Absent/Withdrawn	2	1
Exempt	4	1
Total	44	38

Data Source: Department for Education Assessment Data Holdings, 2023. When there are less than six students in a cohort, no data is supplied.

Spelling



Exceeding Strong Developing Needs Additional Support Absent/Withdrawn Exempt

Year Level	03	05
Exceeding	3	5
Strong	17	22
Developing	14	5
Needs Additional Support	4	4
Absent/Withdrawn	2	1
Exempt	4	1
Total	44	38

Data Source: Department for Education Assessment Data Holdings, 2023. When there are less than six students in a cohort, no data is supplied.

School Attendance

Year Level	2021	2022	2023
Reception	91.0%	86.0%	82.0%
Year 01	86.5%	86.1%	86.8%
Year 02	92.4%	89.7%	83.0%
Year 03	93.3%	90.3%	89.0%
Year 04	88.3%	87.9%	86.9%
Year 05	90.3%	89.0%	85.2%
Year 06	88.6%	85.5%	88.5%
Year 07	92.0%		
Total	90.3%	87.8%	85.9%

Data Source: Department for Education Attendance Data, Semester 1 Report 2023. A blank cell indicates there were no students enrolled. 'Primary Other' includes students enrolled in specialised education options. 'Secondary Other' includes students who have already spent a year at Year 12 and elected to undertake further study at Year 12.

Attendance Comment

In South Australia, all children and young people must be in school from 6 years to 16 years old. They must attend a government or non-government school full time. From age 16 to 17 however, young people must attend school or an approved learning program (such as an apprenticeship, traineeship, accredited course or university). Schools and parents must encourage and support students to come to school every day. Parents and caregivers must make sure their child is enrolled in a school, and attends school all day and everyday it is open, unless a child is sick or has an approved exemption. Teachers and leaders actively follow up when a student misses school, including recording all absences and non-attendance. All schools in South Australia have local attendance procedures governed under the Education and Children's Services Regulations 2020.

Parent Opinion Survey Results

Proportion of agree/strongly agree response(%)

2021 2022 2023



Data Source: 2023 Department for Education Parent Opinions Survey, Term 3 2023.

Intended Destination

Leave Reason	Number	%
NG - ATTENDING NON-GOV SCHOOL IN SA	1	7.0%
TG - TRANSFERRED TO SA GOVERNMENT SCHOOL	13	93.0%

Data Source: Department for Education Destination Data Report, 2023. Data extract term 3 2023. Data shows recorded destinations for students that left the school in the previous year. Data is uploaded by schools in term 3 and may not reflect final or total figures at time of report creation.

Highest Qualifications held by the teaching workforce and workforce composition

All teachers at this school are qualified and registered with the SA Teachers Registration Board.

Qualification Level	Number of Qualifications
Bachelor's degrees or Diplomas	16
Postgraduate Qualifications	8

Data Source: Data extracted from Mandatory Workforce Information Collections as on the last pay date of June 2023. As self-reported by staff in the system.

Please note: Data includes staff who are Actively employed and on extended paid leave. Please note only the highest qualification of the Teaching staff is reported. Excludes any number of other certifications earned.

Workforce composition including indigenous staff

	Teaching Staff		Non-Teaching Staff	
	Indigenous	Non-Indigenous	Indigenous	Non-Indigenous
Full-Time Equivalents	0.0	21.2	0.0	11.1
Persons	0.0	25.0	0.0	19.0

Data Source: Data extracted from Mandatory Workforce Information Collection as on the last pay date of June 2023.

Please note: Data includes staff who are actively employed and on extended paid leave. "Indigenous category" is self-reported by staff in the system.

Financial Statement

Funding Source	Amount
Grants: State	100
Grants: Commonwealth	20,000
Parent Contributions	104,756
Fund Raising	18,451
Other	5,297

Data Source: School supplied data.